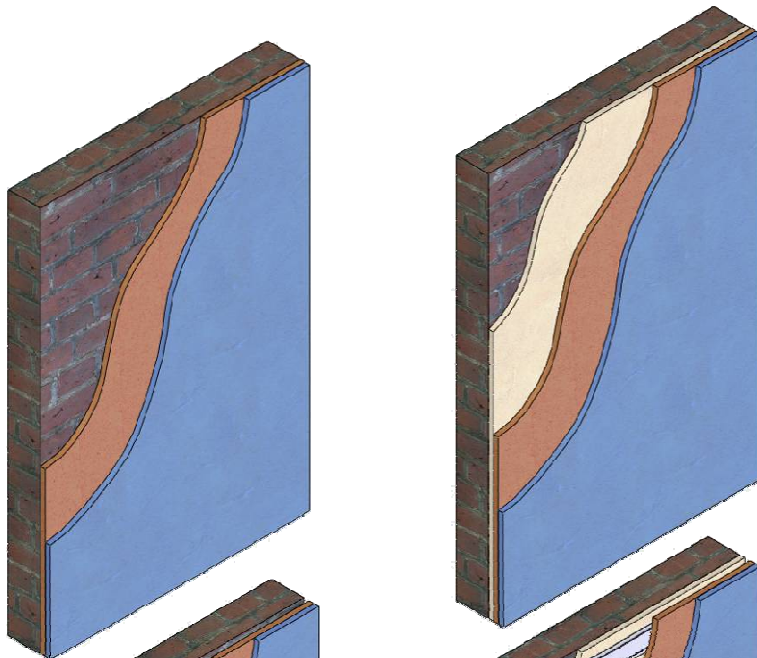
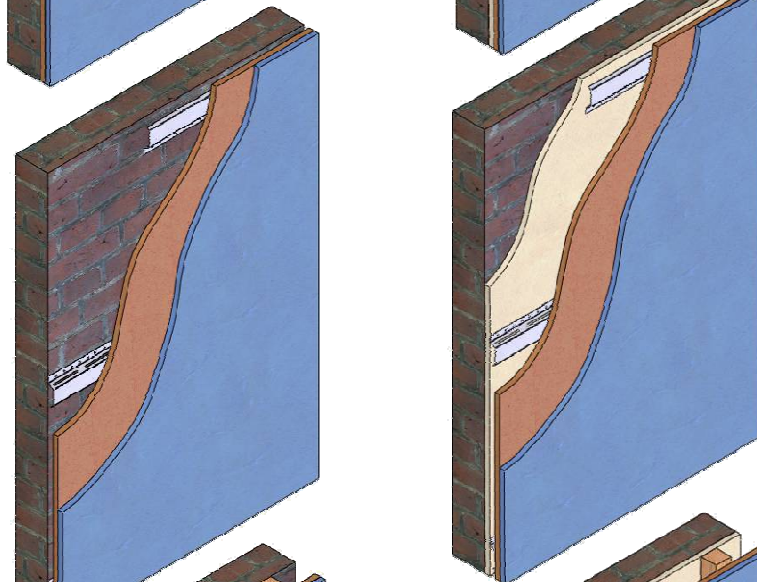


Upgrading Brick or Solid Block Walls with Karma EasyPanel



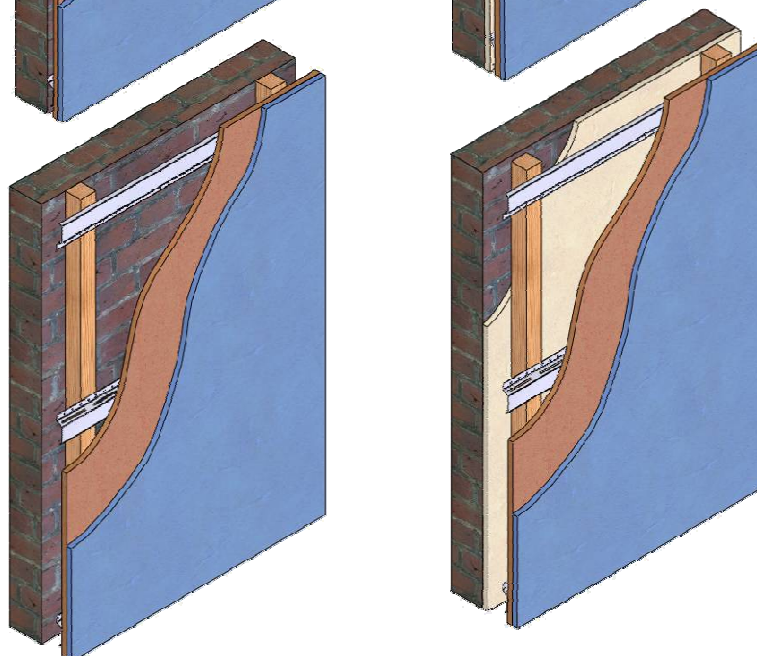
+ 6 to 8 dB (27.5mm)

- 15mm KARMA EasyPanel
- 12.5/15mm Acoustic Plasterboard



+ 10 to 12 dB (43.5mm)

- 16mm Resilient Bar
- 15mm KARMA EasyPanel
- 12.5/15mm Acoustic Plasterboard



+ 12 to 14 dB (67.5mm)

- 24mm x 48mm stud
- 16mm Resilient Bar
- 15mm KARMA EasyPanel
- 12.5/15mm Acoustic Plasterboard

Optional Improvements: (+ 1 to 2 dB)

- 25mm x 45kg/m³ dense mineral wool between studs
- 48mm x 48mm studs with 50mm x 45kg/m³ dense mineral wool between studs